



CONSULTING LOCAL COMMUNITIES TO ASSESS IMPACTS AND PROMOTE AWARENESS AND PARTICIPATION PORT OF PORT MORESBY RELOCATION, PAPUA NEW GUINEA

NCER 2018, NEW ORLEANS
August 28, 2018

CARY L. EHRMAN, CEnvP, IAP2

RAMBOLL

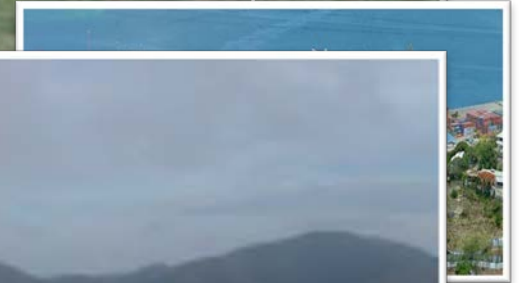
PORT OF PORT MORESBY OPERATIONS

Existing Port:

- *Fairfax Harbour*
- *140+ years of operation*
- *Reaching operational capacity*
- *Traffic congestion and growth issues*

Juxtaposed with:

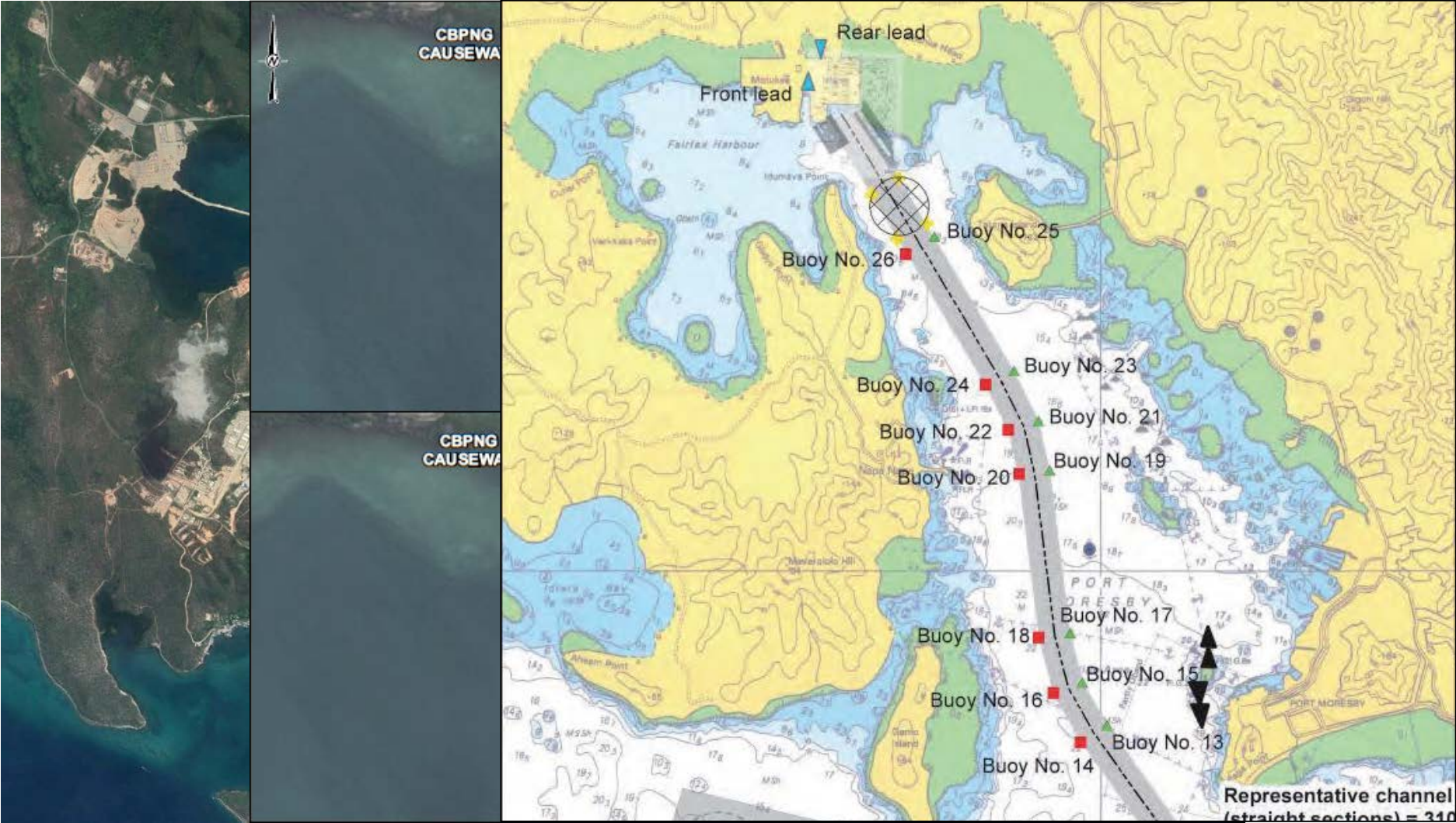
- *National transport and economic development goals*
- *Local planning vision*
- *Creating a more functional and visually aesthetic urban landscape*



MOTU KOITABU VILLAGE LOCATIONS



CUSTOMARY LAND AND POTENTIAL PROJECT IMPACTS



INITIAL I

- Team visits t
- Why the proj
- Selection of l
- Port compon
- construction
- Need for ESI
- EIS process
- Timeframe o
- Scope of bas
- monitoring lo



facebook

Tomorrow's edition of both The National and Post-Courier will carry a FREE 24-page magazine called "The IPBC Review".

"The IPBC Review" will be published twice a year and features articles on projects that the IPBC is managing on behalf of the Government of Papua New Guinea, as well as an update on the performance of State-Owned Enterprises.

Our aim is to provide an insight and greater understanding of the obligations and activities of the IPBC. Be informed...make sure you get your free copy of "The IPBC Review" tomorrow.

Meckena Harry, Nickindi Rambe and 927 others like this. Most Relevant

10 Shares 13 Comments

Daniel D Tasman Great stuff. Looking forward to reading it 3y

Barry Joe That's my pom city.. cool 3y

Tai Tie Seeing is believing so bring it on.. Great transparency initiative! 3y

Joseph N Wilson At least we must know of whats happening

PORT MORESBY RELOCATION PROJECT Project Information Sheet, October 2014

Curtain Brothers Motukea port land to the north. The new port will be adjacent to the east of Motukea including a new pier and wharf. The new port will be on Napa Napa Road to the new Port site. The new port will include a Motukea berth pocket and approach channel. The new port will include berths, cranes, and storage areas. The new port will include container services. The new port will include container and Port materials. The new port will include container buildings.



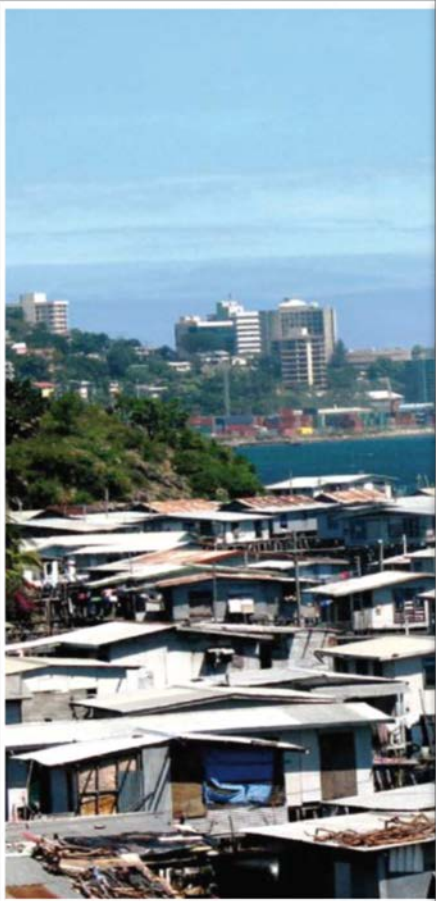
The new port will be operational by January 2018.

Phase
Phase 1: Design and Construction of Environment and Conservation (DEC) as a Level 3 Major Project, requiring an Environmental Impact Statement (EIS) as part of the Environmental Permit assessment.
Phase 2: Design and Construction of Environmental Management Plan to DEC.
Phase 3: Construction works including contractor mobilisation, design and causeway preparation.
Phase 4: Construction works.
Phase 5: Commissioning and relocation of services from the old port to the new Motukea Port.
Phase 6: Operations.

HOUSEHOLD SURVEY/QUESTIONNAIRES



Idubada Fisherfolk



Baruni Village



Tatana Island



Roadside Sales

BASELINE STUDY RESULTS

North Harbour

South Harbour

- Mangrove health in significant decline.
- Dead coral ranging up to 21.3% cover.
- Low diversity, size and abundance of fish --- 99% less than 10cm.
- Seagrass
- High turbidity levels near Motukea.



BASELINE SURVEY



Port of Port Moresby to Motukea

Site Location and Project Outline



Existing Port of Port Moresby

Port of Port Moresby

- Port at Port Moresby cannot meet shipping transport needs.
- Land unavailable to expand port.
- Road transport is congested.
- There is demand for more central business district commercial, tourism and residential development.



LEGEND

- Existing Wharf
- Proposed Wharf Extension
- Motukea Mole
- Proposed Dredging Area
- Submarine Cables
- Approach Channel and Berth Basin
- Canals
- Other

Motukea Port:

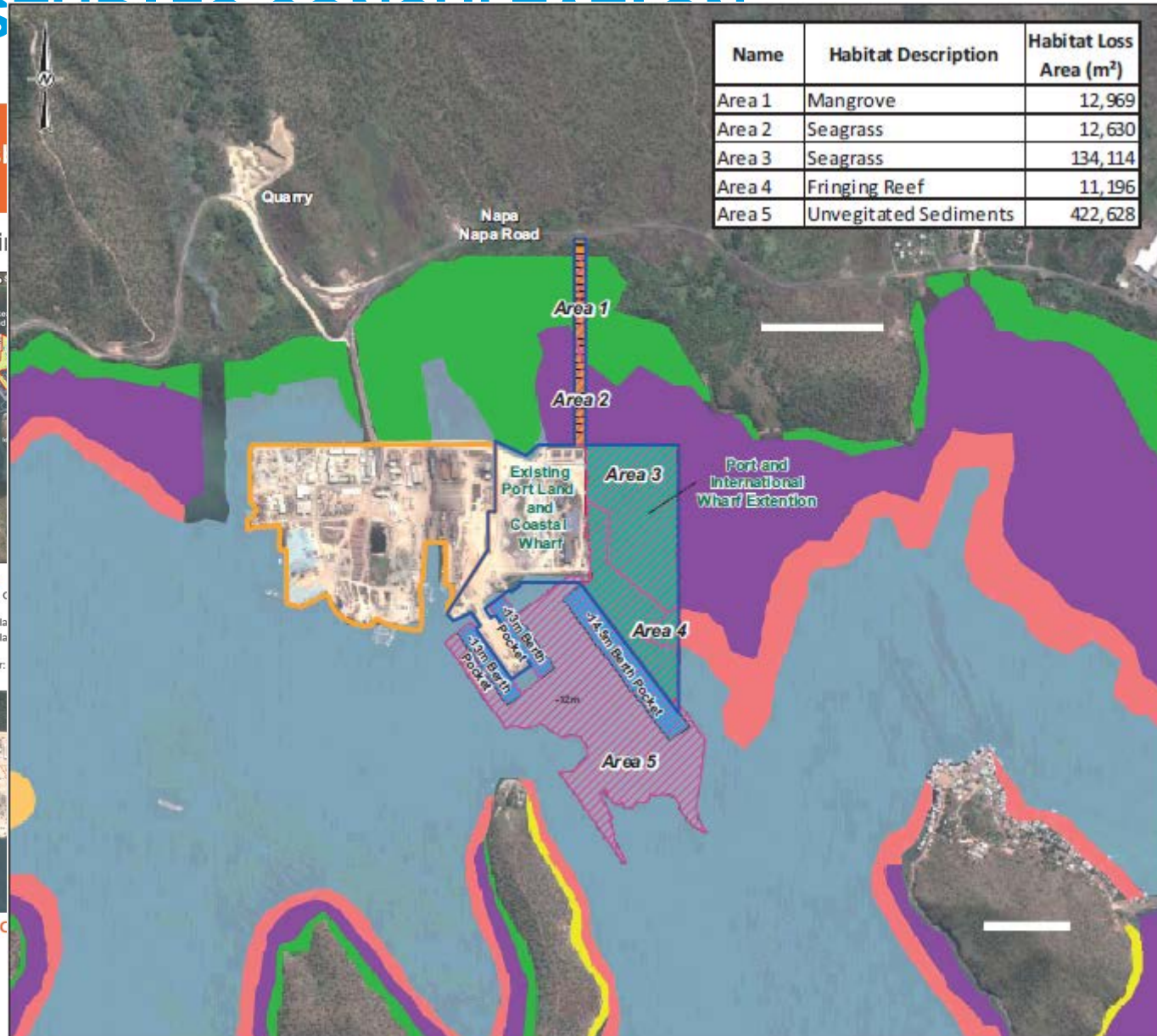
- 21 hectares of existing coastal wharf
- 2.8 hectares reclaimed land
- 18 hectares reclaimed land International wharf.
- New transport corridor:



Port location map



Proposed Site C



Port of Port Moresby Relocation to Motukea

and Environment Approvals



- ▶ Level 3 = highest level of project categorisation.
- ▶ Project is Major Project of national significance.
- ▶ EIS required – environment and social impact assessment.
- ▶ EIR outlines studies to be undertaken for Project Environment Impact Statement (EIS).

▶ July 2014 Marine ▶ October 2014 Socio-economic

- ▶ EIS includes environmental and social impact assessment, management and monitoring needs.
- ▶ CEWP – Outlines environmental risks and management of Port construction phase.

- ▶ EIS will be available for review.
- ▶ DEC will likely hold a formal EIS Project consultation meeting.


- ▶ New Motukea Port commences operation.
- ▶ Port of Port Moresby no longer operates at old site.



KEY AREAS OF PROJECT RELATED COMMENT



COOPERATIVE OPPORTUNITIES



Natic

KEEP

STOP

POM SE

Motu-Koitabu villages chosen to pilot fresh water project

May 30, 2018 The National National

Article Views: 149

MOTU-Koitabu villages of Vabukori and Pari have been identified as sites for a pilot project in converting sea water into fresh drinking water.

This was made possible with an agreement between the National Capital District Commission and Pacific International PNG Ltd.

Pacific International will be installing desalination plants that convert sea water to fresh water.

Jica, the Japanese government funding agency, will be acting as technical advisers since the desalination units are manufactured in Japan.

The project will impact about 8000 people in both villages.

NCD Governor Powes Parkop told the media: "It's absolutely affordable to install these desalination units in the villages. If we have to install two or three more in the same villages it would be worth every kina.

"This initiative is part of our vision and goal in the next five years to try our best to bring the Motu-Koitabu villages on par with the rest of the city.

"One of my priorities is to modernise the Motu-Koitabu villages. That's not easy. These villages face a lot of challenges – social, economic, cultural, political, health and infrastructure.

"NCD and myself cannot solve all the problems overnight. But there are things that we can absolutely do and that is in the area of physical infrastructure."

Councillor for Vabukori village Turaho Morea thanked the governor and NCD for recognising the urgent need of fresh drinking water in Motu-Koitabu villages.

"Thank you for identifying Vabukori and Pari as the sites for the pilot projects. If there's one thing in abundance in Pari and Vabukori it's sea water. Land, as we all know, is an issue, which we will save for another day. We can convert sea water into something that is essential for life and that is clean fresh water," Morea said.

"As a member of the Motu-Koita Assembly, thank you, governor, for recognising the importance of Motu-Koitabu people."

QUESTIONS?